

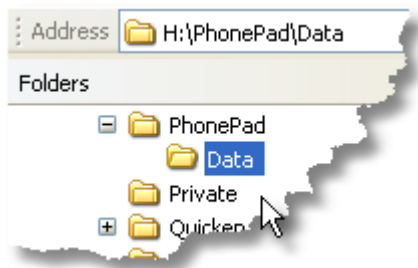


PhonePad Instruction Sheet

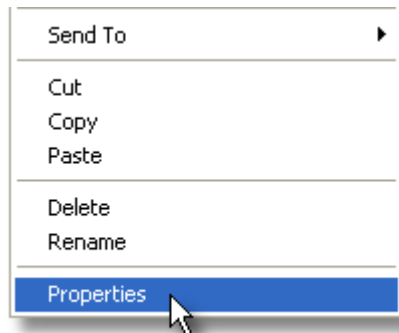
Creating a Shared Directory

When setting up PhonePad in **Local Mode** on a **peer-to-peer network**, you need to set up the PhonePad data directory as a shared directory so that other users can access the PhonePad database. Select a computer that will act as the host for the PhonePad database, and then follow these steps from that computer.

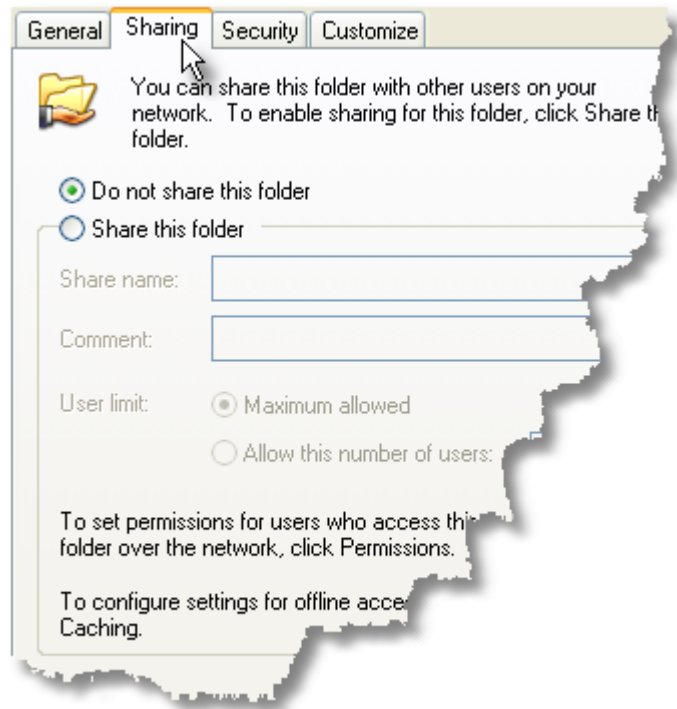
1. Open **Windows Explorer**.
2. Navigate to the PhonePad data folder (directory).



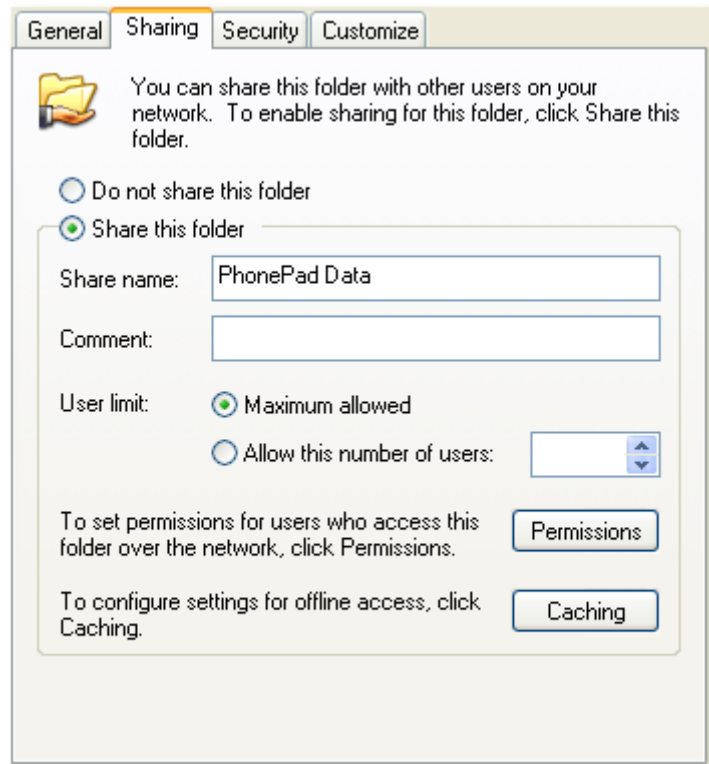
3. Right-click on the folder and select **Properties** from the popup menu.



4. Click on the **Sharing** tab.

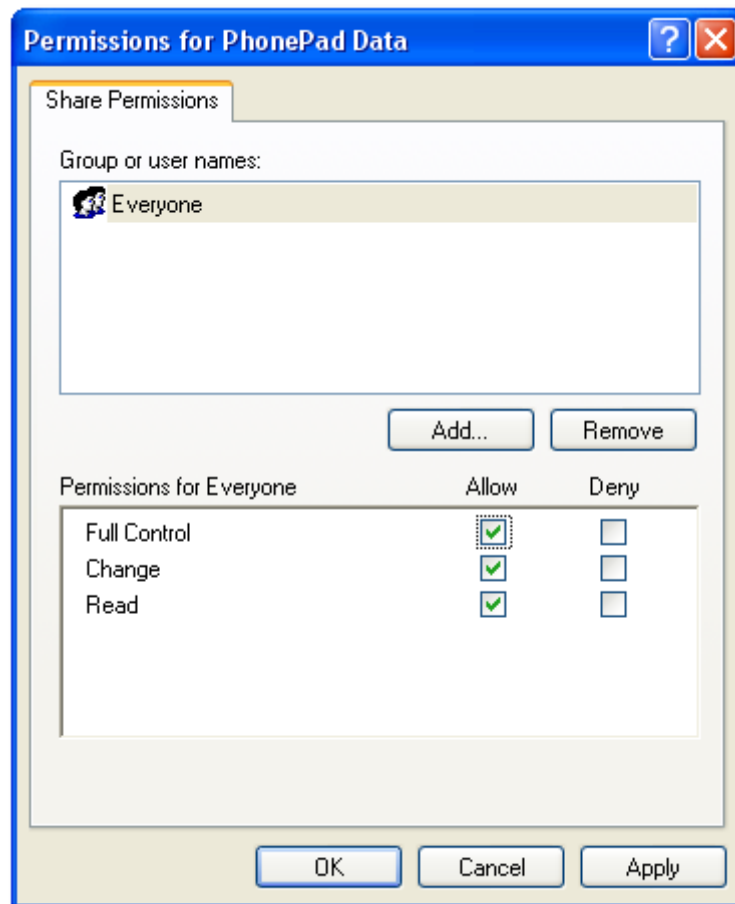


5. Click on **Share this folder**.
6. Enter "PhonePad Data" (or something similar) for the **Share name**.



7. Click on the **Permissions** button.

8. Set the permissions for **Everyone** to **Full Control**.



9. Click the **OK** button.
10. Other users should now be able to access this directory via the network.

These instructions apply to:

- ▶ **Windows XP**
- ▶ **Peer-to-peer networks**
- ▶ **PhonePad running in Local Mode**